



**MISSOULA
ART
MUSEUM**

FALL/WINTER 2013

DIRECTOR'S COMMENTS | Laura J. Millin

MAM is grateful to its large community of supporters for helping the museum present the best new art and artists of our region. Generous donations from individual, families, donors, volunteers, the museum's network of business partners, foundation grantors, and foundational support from local government together help meet fundamental needs, from staff salaries and artists honoraria to ever evolving educational programs.

In order to embrace and acknowledge these overlapping circles of support as one family we are uniting membership and annual fund into one JOIN//GIVE program and boosting our programming and benefits. Beginning September 1, 2013 all donors are considered members and all members are considered donors. After all, MAM is inclusive by the fact that the museum is open to the public free of charge 314 days a year.

Only members will receive MAM's handsome newsletter in their mailbox along with invitations to events bringing members face-to-face with artists, scholars and performers. Preview wine & cheese receptions featuring intimate interaction with the featured artist begin with Sara Siestrem's *BALLAST* on September 5. Members will receive first dibs and discounted tickets for events such as the new MAM Chamber Music Series featuring Lydia Brown on MAM's Yamaha S Series Grand, accompanied by talented musicians from around the globe, beginning December 13. Pre-lecture gallery tours with a glass of wine will be offered to members, such as October 2 from 5 to 6 PM, prior to Tom Patterson's Lecture *Strange and Wonderful*.

Special annual member events include Brunch with the Director and Dinner with the Director, which feature a conversation between myself and a featured artist or scholar. Special events produced at MAM by program partners will offer special access to MAM members, such as the exclusive Festival of the Book's Writer's Reception at MAM on October 11. Visit MAM's web site for other special offerings and discounts that are in the works with MAM's other business partners.

MAM's 2013/14 Strategic Plan calls for an increased focus on artists and increased audience participation. Our new JOIN//GIVE initiative is an expression of this strategic direction. Thank you for joining and giving and helping MAM fulfill its mission to engage audience and artists in the exploration of contemporary art.

NEW EXHIBITIONS // 03

RECENT ACQUISITIONS // 08

CONTINUING EXHIBITIONS // 08

TRAVELING EXHIBITIONS // 09

PROGRAMS // 10

ART CLASSES // 12

EDUCATION + OUTREACH // 14



Sara Siestreem, *Ballast*, oil and graphite on paper / *So I Hear You Like Sunsets*, oil and graphite on paper / *The Canadian Sea Lark*, oil and charcoal on paper. ▲

SARA SIESTREEM: BALLAST

September 6, 2013 - January 26, 2014 // Lynda M. Frost Contemporary American Indian Art Gallery

Members' Event: Meet the Artist, September 5, 5-6 PM

Artist Reception: September 6, 5-9 PM

Gallery Talk: September 6, 7 PM

Artist Tour, September 7, 12 PM

For Educators: How to Look at Indian Art, September 30, 12-3:30 PM

MAM is honored to host this exhibition of paintings by Portland, OR artist Sara Siestreem. Siestreem creates abstract paintings through a process which incorporates color field painting, automatic drawing, and incorporation of symbology. While these approaches may overlap, the consistency she achieves is remarkable, producing one resolved composition after another. The over 20 abstract works selected for her first solo museum exhibition reflect a maturity that has drawn attention to her career.

The arts are practiced and appreciated by all members of Siestreem's family and are an everyday part of family life. This family sharing has deeply influenced her as she describes the different work that her parents, grandparents, and aunts have shared and whose practice has inspired her. She acknowledges this creative

imprinting as a "gift", however, Siestreem's work has a uniqueness to it that is all her own. Her background, instincts, and knowledge paired with the act of painting and savvy titles work together to create her unique language.

Siestreem's approach is based in the observation of nature. Through observation the artist realizes the interconnectedness of nature and expression through patterns and repetition. She states, "My painting practice is a meditation, focused in to memory and reserves of calm and quiet. My intention for the viewer is that the paintings are vehicles for transportation into and out of themselves. My hope is that in the same way we as animals receive an energetic charge from witnessing the land or other animals or any type of event, so will these collections of my own process

be able to affect the viewer."

Siestreem received a BS from Portland State University and an MFA from Pratt Art Institute in Brooklyn, NY and is represented by the Augen Gallery in Portland, OR. Siestreem is from the Pacific Northwest and is an enrolled member of the Coos Tribe of the Confederated Tribes of Coos, Lower Umpqua, and Suislaw Indians. The exhibition is hosted in the Lynda M. Frost Contemporary American Indian Art Gallery, a gallery dedicated to honoring the creative cultural contributions of American Indian people to contemporary art, and to ensure that Indian artists will always have a place to celebrate that contribution. This exhibition is generously sponsored by the Paul G. Allen Family Foundation. MAM would also like to thank the artist and the Augen Gallery who have worked diligently to assemble this exhibition.

© EDWARD KIENHOLZ AND NANCY REDDIN KIENHOLZ: THE JESUS CORNER

September 13, 2013 - January 30, 2014 // Faith Pickton and Josephine Aresty Gallery

Kienholz Connection Lecture Series

Beth Sellars, November 6, 7 PM

Ted Hughes, Film: *Kienholz on Exhibit*, November 20, 7 PM

Raphael Chacon, December 4, 7 PM

The Missoula Art Museum is proud to bring to the community *The Jesus Corner*, an important installation by one of the world's most rebellious and provocative figures Edward Kienholz and collaborator

arranged into a Christian shrine. Despite diligent effort, neither the Kienholzes nor the building's owner were able to find the renter. Though Kienholz was an avowed atheist, he was touched by Thurman's

marketing art and fueled the creativity of artists such as Ed Ruscha, Ken Price, David Hockney, Judy Chicago, and others.

In 1957, Kienholz co-founded the now famous Ferus Gallery with legendary curator Walter Hopps. Ferus Gallery would become the go-to space for a new breed of L.A. artists, featuring the first solo shows by Ed Moses, Robert Irwin, Ken Price, Ed Ruscha, and also the first solo show by the famous New Yorker Andy Warhol.

Kienholz's twenty year career in L.A. was highlighted by his controversial retrospective at the Los Angeles County Museum of Art in 1966. County supervisors were outraged by the explicitness of Kienholz's tableaux, especially *Back Seat Dodge '38*, and demanded that the artwork be removed or the whole show shut down. However, LACMA's director and the museum board stood their ground, and the exhibit remained. Kienholz's retrospective had the largest attendance of any contemporary art show at LACMA up to that time, cementing Kienholz's reputation.

In 1972, Kienholz met photographer Nancy Reddin. The two proved to be compatible both personally and artistically, and soon married. In 1981, Kienholz took the extraordinary step of adding Nancy's name retroactively as co-author to all of the work they had created since 1972, and all subsequent works were signed by both artists.

Following a 1973 fellowship awarded by the West German government, the Kienholzes began a routine of spending half the year in Berlin, and the other half in Hope, ID. Kienholz was always considered a California artist, though he left L.A. in 1972. Over the years, his reputation flourished and the prolific artist worked and exhibited until his passing in June 1994.

The Jesus Corner comes to MAM from the permanent collection of the Northwest Museum of Arts and Culture in Spokane, WA, to whom we are deeply grateful. MAM would also like to thank Rocky Mountain Moving and Storage & Reineking Construction for their support. This exhibition is generously sponsored by the Paul G. Allen Family Foundation.



Edward Kienholz and Nancy Reddin Kienholz, *The Jesus Corner*, installation. ▲

Nancy Reddin Kienholz. The Kienholz's installations have been described as assemblage with a vengeance, confronting and exposing the harsh realities of American life that mainstream society often failed to address or even acknowledge.

The Kienholz's conglomerations of found objects, mannequins, and plaster cast figures address difficult racial, political, sexual, and psychological subject matters, often bluntly and brutally, capturing a dark view of the human condition. *The Jesus Corner*, produced in 1982, is one of Ed and Nancy's more affectionate pieces. *The Jesus Corner* uses material salvaged from a condemned building in downtown Spokane, a faithful reconstruction of a store window display by a man named Roland Thurman, who rented the shop on a monthly basis but never opened the store to the public. The window was filled with pictures, cards, and symbols carefully

"honest and humble expression of one man's belief and dedication to a supreme being."

Kienholz was born in Fairfield, WA, a small farming community in the wheat country just south of Spokane. After high school, he left the farm and travelled throughout the west, working odd jobs and, as a largely self-taught artist, making art. In 1953 he arrived in Los Angeles, where he would remain an integral part of the art scene for the next 20 years.

In the 1950s, Los Angeles was considered an art backwater with no modern art museums and few galleries. New York City was the undisputed center of the art world, dominated by the Abstract Expressionist titans of the time. However, a mood was developing against the dominance of Ab Ex, an art considered by a growing group of artists as too formal, remote and angst-ridden. L.A. offered freedom from an established way of seeing, making, and

☎ STRANGE AND WONDERFUL – AMERICAN FOLK ART FROM THE VOLKERSZ COLLECTION

September 24 - December 22, 2013 // Carnegie Galleries

Members' Event: Meet the Author Tom Patterson, October 2, 5-6 PM

Folk Art Lecture: Tom Patterson, Curator & Author, October 2, 6:30 PM, Free and Open to the Public

Exhibition Reception: October 4, 5-9 PM

Gallery Talk: Tom Patterson & Willem Volkersz, October 4, 7 PM

Strange and Wonderful represents a selection of works from the collection gathered by Willem and Diane Volkersz. The Volkerszes are artists and collectors and their Self Taught/Folk Art collection is truly a collaborative, life-long endeavor. This traveling exhibition represents a fraction of the hundreds of objects in the Volkersz collection and range from works by Alva Gene Dexhimer to Rev. Howard Finster.

The work included in the exhibition features drawings, paintings, constructions and sculptures. Almost all of the artists are considered self-taught, or more specifically have a passion for their practice which functions without the support of instruction or academia. The consequence of this is obvious, direct and honest expressions that are executed with sometimes the barest of materials. The Volkerszes used a hands-on approach to their collecting by visiting, becoming acquainted with and documenting the environments of many of these artists. The window of opportunity in which they collected these works is gone, for most of these artists are deceased. The language in which scholars frame this work is ever changing. It is important to note that many significant collections of self-taught and folk art have found homes in American art institutions and MAM is pleased to host this slice of Americana.

The Volkersz Collection is itself a unique artwork. Many collections have been assembled by people from all walks of life, but this collection is different. Willem and Diane are artists and educators with an appreciation of creative innocence. They are extremely well-travelled, with a wealth of life experiences. They immersed themselves into these artist's environments. This collection was assembled by disciplined and generous collectors with a sensitivity to the attention that each of these oft ignored artists deserves.

Strange and Wonderful – American Folk Art from the Volkersz Collection has

been curated by Sam Gappmayer of the Colorado Springs Fine Arts Center and Stephen Glueckert of MAM in consultation with Willem Volkersz. MAM is honored to present Folk Art scholar and essayist for the exhibiton's catalog, Tom Patterson. Patterson has published on outsider artist Rev. Howard Finster and is the author of *Contemporary Folk Art: Treasures from the*

Smithsonian American Art Museum. This traveling exhibition and catalogue will be featured at the Colorado Springs Fine Arts Center in 2014.

The MAM exhibition and catalogue are generously supported by Paul G. Allen Family Foundation. MAM thanks Willem and Diane Volkersz for their willingness to share this collection.

▼ Mark Negus, *A Fabulist's Puppet for Thoughts from the Deep*, wood.



Christine Joy, *Union*, red maple. ▲

📅 CHRISTINE JOY: CURRENTS

October 2, 2013 - January 15, 2014 // Morris and Helen Silver Gallery

Artist Reception: November 1, 5-9 PM

Gallery Talk: November 1, 7 PM

Saturday Family Art Workshop: November 2, 11 AM - 12:30 PM

The exhibition *Currents* presents a selection of works from Bozeman artist Christine Joy. Joy creates sculpture from willows, red osier, and other branches. Although form and materials are rooted in traditional basketry, Joy's approach and technique grow firmly out of contemporary sculptural practice. The majority of her objects can be walked around and viewed "in the round," a concept fixed in contemporary sculptural aesthetic. Joy's work has nothing to do with creating utilitarian containers, yet the intrinsic point of origin often lends reference to the works as basketry or basket forms. She considers herself a basket maker, just not in the traditional sense.

Joy explains that she never intended on becoming a basket maker when, in the spring of 1981, she simply wanted to make a basket. Over the course of the next several years her creative and technical processes evolved until she fell in love with working with willow cuttings. Her material of choice, wild willow, which she harvests in the fall, simultaneously guides and constrains the forms while she creates them. Joy works "one stick at a time in collaboration with the willow and the form taking shape." This fundamental nature of the work – that the medium enlightens the form until the material and object become one – is its sheer power and the

measure of confidence in Joy's skilled, intuitive approach. The title *Currents* references the essence of Joy's work – repetition, rhythm, flow and an emotion that communicates with the natural materials but also suggests natural force was at play in the object's creation. The sculptural works in this exhibition occupy the space of the second floor Morris and Helen Silver Gallery with gracious presence and nature's subtle, subdued palette of reds, greens and whites.

Christine Joy has an MA in Art Therapy from Vermont College of Norwich University, Montpelier, VT and a BFA in Printmaking from the Rochester Institute of Technology in Rochester, NY.

THE ARTISTS OF OPPORTUNITY

October 4, 2013 - January 19, 2014 // Travel Montana Lobby in the Andrew Precht Addition and Lela Autio Education Gallery

Artist Reception: December 6, 5-9 PM

Gallery Talk: Tom Lind, December 6, 7 PM

MAM is proud to present the works by artists in the Community Arts Program at Opportunity Resources Inc. (ORI). ORI is a nonprofit organization committed to supporting persons with disabilities and enhancing the quality of their lives. The Community Arts Program at ORI encourages self-expression and growth through participation in the arts.

Tom Lind, Director of the Arts Program at ORI explains, "The art of Opportunity is the fuel of a rather unique self-esteem

machine. This unfiltered, humble, and straight from their hearts expression has a way of creeping into the consciousness of those who view it. In the end it tends to put us all at a higher level of the special!

"While not formally an art therapy workshop, the arts program does foster routine access to the arts as a way of increasing self-esteem, fostering self-awareness and providing a foundation for personal growth."

The Community Arts Program

produces an annual art calendar featuring many of the ORI artists, and has developed an on-line gallery. It also has a downtown presence at the Palace Hotel lobby which is ever changing and offers the Missoula community insight into the careers of many of the ORI artists.

This exhibition by the artists of Opportunity Resources at the MAM is an opportunity to see first-hand many of the works that can be viewed on-line or reproduced in the annual calendar.

Chris Olson, *Untitled*, digital print. ▼



MATRIX PRESS

October 8, 2013 - January 26, 2014 // Shott Family Gallery

Contemporary Collectors Circle: Jim Bailey, October 24, 5:30 PM

The Missoula Art Museum would like to thank Professor James Bailey and MATRIX Press for the gift of this beautiful selection of 23 prints executed by eight talented artists invited to work with MATRIX Press, The University of Montana's visiting artist program. This recent gift joins two earlier gifts to MAM of artworks by art world legends Richard Mock and Miriam Schapiro, also executed at MATRIX Press.

MATRIX Press was founded in 1998 by Bailey for the purpose of education, development, and the promotion of printmaking and fine art prints, and is specifically dedicated to supporting the

advancement of artists working within the printmaking discipline.

As part of its mission, MATRIX Press invites nationally and internationally known artists to Missoula to produce limited edition prints in collaboration with students and the printmaking faculty. Past visiting artists include the University of Minnesota's Jerry Krepps, world renowned feminist artist Miriam Schapiro, Chicago's Tony Fitzpatrick, and local printmaking heavy weights Bev Beck Glueckert and James Todd.

Each visiting artist works with Bailey and a team of assistants to create an

astounding range of prints, showcasing the inventiveness and skill of the artists and the liveliness of printmaking today. The techniques displayed in the donation run the gamut of lithography, intaglio, relief, silkscreen, chine collé, collage, and the use of experimental materials such as aluminum foil, tar paper, and found objects. Each print is executed with a great skill that captures the strengths and approaches of each artist: the careful, exquisite relief renderings of James Todd and Tyler Krasowski, the dynamic layers and collage work of Antonia Contro and Larry Anderson, the gorgeous use of

CONTINUING EXHIBITIONS

JAY SCHMIDT: WARNING SHOTS THROUGH SEPTEMBER 15 // DONNA GANS: IT'S WHAT YOU DON'T SEE THROUGH SEPTEMBER 22 // INDIAN EDUCATION FOR ALL THROUGH SEPTEMBER 22 // PETER VON TIESENHAUSEN: ETHER THROUGH SEPTEMBER 22 // JARED SHEAR: COUGAR PEAK-A-BOO THROUGH SEPTEMBER 29 // LOUISE LAMONTAGNE: MY CLOSET COLLECTION THROUGH SEPTEMBER 29



Details clockwise from top left: Jay Schmidt, *Truck* // Donna Gans, *It's What You Don't See* // Corwin Clairmont, *Buffalo Thinking of Ancestors* // Jared Shear, *Cougar Peak #224* // Peter von Tiesenhausen, *Icarus IV* // Louise Lamontagne, *Meditation in NYC 1*. ▲

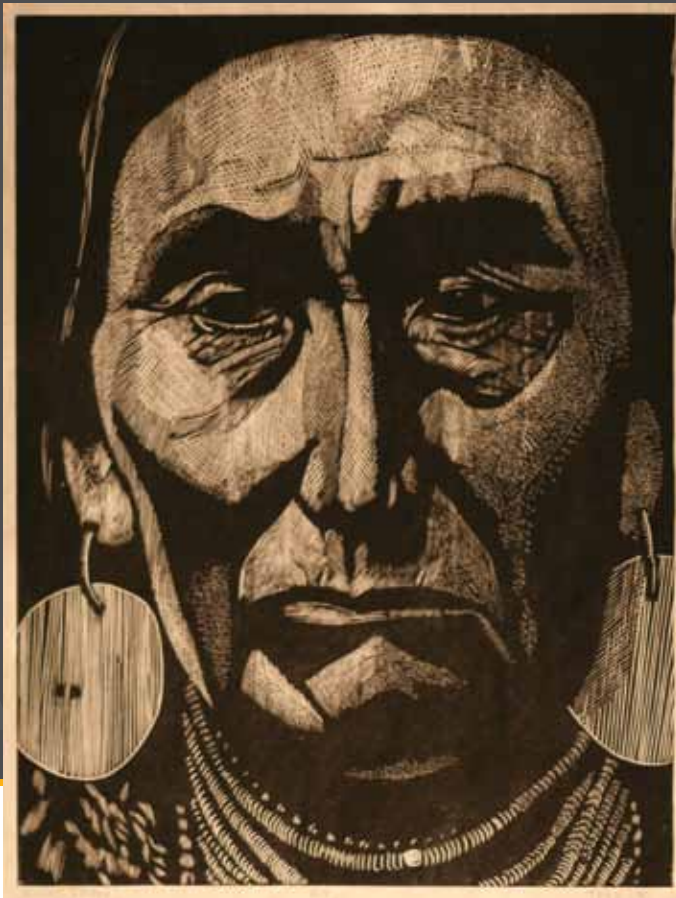
Do you see an exhibit that interests you?

Contact your hometown museum and suggest they email MAM Curator Stephen Glueckert, stevegl@missoulaartmuseum.org, to talk about bringing this show to your museum.

ACQUISITION

color in Tony Fitzpatrick and Mary Farrell's carefully articulated artworks, and the expressionist carving and surreal subjects of Brad Allen's block and lino prints. In some cases, the technique is almost mind-boggling in its successful use of experimental materials, as in the luminous light catching aluminum foil etchings in Pieter von Tiesenhausen's print suite entitled *Ether*.

MAM would like to thank James Bailey for the generous donation and important additions to its collection and the MATRIX Press for bringing such skilled and talented artists into our community.



James Todd, *Chief Joseph*, woodcut. ▶

Community Partnership City Hall Second Floor Hallway

If you happen to be at Missoula's City Hall for a meeting with the mayor, you will see a second floor hallway bedecked with a selection of beautiful artworks from Missoula Art Museum's permanent collection. Accompanying the new lovely hardwood floor and fresh coat of paint outside the Mayor's office are artworks by Walter Hook, Lee Morrison, Ted Waddell, Russell Chatham, and others. So next time you are in City Hall dropping off a late sewer bill be sure to take in some gorgeous art that complements our fair city.

TRAVELING EXHIBITIONS



THE TRUNK SHOW:
BRICOLAGE FIBER
ARTISTS

**Holter Museum of Art,
June-September 2014**



HIDING IN
PLAIN SIGHT:
PHOTOGRAPHING
THE HUTTERITES OF
LIBERTY COUNTY BY
JILL BRODY

**Mondak, Nov-Dec 2013 //
Carbon County Arts Center,
November 2014**



OPUS CORVUS:
PHOTOGRAPHS BY
LARRY BLACKWOOD
**Holter MOA, January-April
2014 // Carbon County
Arts Center, May - June
2014**



PORTRAITS OF
PRINTMAKERS
**New England College Art
Gallery, September 12 -
October 26, 2013**

MAM PROGRAMS

First Fridays

Now open until 9 PM! View exhibitions in six galleries, sample delicious wine, beer, and non-alcoholic beverages, and get the inside scoop at the 7 PM gallery talks with exhibiting artists. Music by the KBGA djs. Always free. Thanks to the **Missoulian** for their support of MAM's First Fridays.

SEPTEMBER 6

Join exhibiting artist Sara Siestrem on a walk through her exhibit *BALLAST*. She will talk about abstract paintings and her process which incorporates color field painting, automatic drawing, and incorporation of symbology, 7 PM.

OCTOBER 4

Stroll through MAM's new exhibition *Strange and Wonderful* to experience the world of folk and self-taught art. At 7 PM, join exhibit collectors Willem and Diane Volkersz and author Tom Patterson for a discussion.

NOVEMBER 1

Currents presents a selection of sculptures of willows and red osier branches by Bozeman artist Christine Joy. The majority of Joy's objects can be walked around and viewed "in the round", a concept fixed in contemporary sculptural aesthetic. Join her for a gallery talk at 7 PM.

DECEMBER 6

Visit with the artists of Opportunity Resources Inc. ORI encourages self-expression and growth through participation in the arts and their exhibit at MAM will delight you. Tom Lind, Director of the Arts Program at ORI says, "The art of Opportunity is the fuel of a rather unique self-esteem machine." Hear more about this program at 7 PM.

And More

SEPTEMBER 5

Members' Event: Meet the Artist Sara Siestrem, 5-6 PM

Members are invited to meet exhibiting artist Sara Siestrem. At 5:30 PM, join Siestrem as she talks about her work in *BALLAST*. Wine and refreshments served.

SEPTEMBER 7

Artist Talk: Sara Siestrem, 12 PM, Free

Meet Sara Siestrem within her exhibition for a casual and engaging talk about her artwork.

SEPTEMBER 28

Smithsonian Museum Day

MAM is part of the giant world of museums and will be hosting Smithsonian Museum Day for the community.

SEPTEMBER 30

For Educators: How to Look at Indian Art, September 30, 12-3:30 PM, Fee: \$15 or \$20 with lunch

Guest lecturer, artist and educator Sara Siestrem will discuss how to recognize Traditional, Customary, and Contemporary Native American art. Informal luncheon, 12-1 PM, Lecture/Discussion 1 PM, then practice in Frost Contemporary American Indian Art Gallery and in classroom with work from MAM Contemporary American Indian Art Collection, 2:45-3:30 PM.

OCTOBER 2

Members' Event: Meet the Author, 5-6 PM Folk Art Lecture by Tom Patterson 6:30 PM, Free and open to the public

From a memoir-in-progress, art writer and independent curator Tom Patterson recalls his initial visits in 1980 to two extraordinary environments by artists represented in "Strange and

Beautiful"— Reverend Howard Finster and Saint EOM (Eddie Owens Martin), the subjects of Patterson's first two books. Patterson's reading will be accompanied by projected images of these environments as they appeared 30 years ago.

OCTOBER 11 & 12

Festival of the Book

MAM is partnering with FoB to present authors and readings. Please check the FoB program for a listing of the authors and events that will take place at MAM.



OCTOBER 24

Members' Event: Contemporary Collectors Circle, 5:30 PM

Members of the CCC will gather for an evening with U of M Professor of Printmaking James Bailey. Bailey will discuss the artist-in-residence program he established at UM, MATRIX Press, and share his experiences working with world class artists such as Miriam Schapiro, Richard Mock, Bev Beck Glueckert, and others. In addition we will view prints from MATRIX Press' archives.

Join the Contemporary Collectors Circle today. For \$100 in addition to any membership level, you will help contribute towards the purchase of art for the MAM Collection. In exchange, you will be treated to special CCC events including visits with private collectors and artists, guest lectures, and behind the scenes trips to other artistic and cultural institutions. For more information, contact Ted Hughes, MAM Registrar: 728-0447, ext. 222 or ted@missoulaartmuseum.org. Sponsored by the Good Food Store.

KIENHOLZ CONNECTION:

SAVE THE DATES

DECEMBER 11

Volunteer Appreciation Party, 5-7 PM

MAM Volunteers are a hardworking crew who deserve a night of celebration. Let us thank you for everything you do for MAM with an evening of bubbly drinks, soothing music, and beautiful art. Relax – you deserve it! For more information, or to become a volunteer, contact Anna Buxton at 728.0447, ext. 230.

DECEMBER 13

MAM Chamber Music Series, 7 PM

This series was created to showcase innovative musical works by living composers and leading American and international musicians, expanding the boundaries of the traditional concert-going experience and attracting new listeners to contemporary classical music. Lydia Brown will serve as artistic director.

The initial concert in the 2013/2014 season on December 13th will feature Violinist Robin Scott, prizewinner in the Yehudi Menuhin and Irving Klein International Violin Competition, and pianist Lydia Brown of the Metropolitan Opera. MAM Members may purchase tickets for \$50 beginning September 1. Tickets go on sale to the general public December 1 for \$100. Call 406.728.0447, ext. 225 to purchase tickets.

DECEMBER 31

First Night, 12 - 4 PM

MAM will host performances to celebrate First Night. Please check the FN program to determine times and performers.

The Jesus Corner Lecture Series

MAM has scheduled three lectures to enlighten the appreciation and discussion regarding *The Jesus Corner*. Ed and Nancy Kienholz have had a lasting impact on artists working today, and particularly contemporary voices in the American West. MAM has tapped three brilliant regional minds to help raise the level of discussion and celebrate this important exhibition. Free and everyone is welcome to attend.

NOVEMBER 6

Beth Sellars: The Story Behind The Jesus Corner, 7 PM

On January 19, 1994, during Beth Sellars' tenure as Curator of Art at the Cheney Cowles Museum in Spokane, Washington, arrangements were made with Ed and Nancy Kienholz to acquire *The Jesus Corner* for the museum's collection. Sellars' presentation will include the back story and seldom-seen images of this important acquisition.

NOVEMBER 20

Ted Hughes: Kienholz – The L.A. Scene, 7 PM

MAM Registrar and resident art historian Ted Hughes will present and discuss June Steel's 1969 documentary *Kienholz on Exhibit*. The short documentary covers Ed Kienholz's controversial 1965 retrospective at the LA County Art Museum with footage and interviews taken at the opening. In addition, Hughes will place Kienholz as an integral part of the Los Angeles avant garde of the 1950s and 1960s that arose in reaction to New York City's dominance of the global art scene.

DECEMBER 4

H. Rafael Chacón: Kienholz – Big, Bold and Brash, 7 PM

Professor of Art History and Criticism at UM, Chacón will address the legacy of Ed and Nancy Kienholz. Coming from a small rural community in Washington State, the couple has had a lasting impact on the arts across the world, specifically on sculpture and installation art. Chacón will outline Ed Kienholz's evolution as an artist and eventual status in the American art community and emphasize his continuing influence in today's practice.

42nd Benefit Art Auction

OCTOBER 20, 2013

Deadline for Submissions

Visit www.mam.submittable.com/submit to view the Prospectus and submission page.

JANUARY 3, 2014

42nd Benefit Art Auction Exhibition Opening and Artist's Reception, 5-9 PM

Join us for a gallery talk, hors d'oeuvres, live music and cash bar.

FEBRUARY 1, 2014

42nd Benefit Art Auction University of Montana UC Ballroom

Presenting Sponsor: 



ART CLASSES FALL 2013

FOR KIDS

AFTER SCHOOL ART ADVENTURE I

**Tuesdays, Sept 10 - Oct 15 with
Bev Glueckert, for ages 9-12 OR
Thursdays, Sept 12 - Oct 17 with
Melissa Madsen, for ages 9-12
3:45-5:15 PM, 6 weeks, \$50/45, Drop
in \$12 (please call first)**

AFTER SCHOOL ART ADVENTURE II

**Tuesday, Oct 22 - Nov 26, with Bev
Glueckert, for ages 6-9 OR Thursdays,
Oct 24 - Dec 5 with Melissa Madsen,
for ages 9-12
3:45-5:15 PM, 6 weeks, \$50/45,
Drop in \$12 (please call first)**

Students will work on a variety of projects using diverse media. Projects are inspired by MAM's enriching and unique array of exhibitions. The exhibitions work as a starting point for students to delve into their creativity. Children are given plenty of opportunity for problem solving and self-discovery. Teachers will inspire and encourage your child's creativity.

FOR TEENS

TEEN ARTIST WORKSHOPS

**Second Wednesday of each month,
4-6 PM**

Teens, ages 13-18, you have an amazing opportunity to learn from working artists at MAM. Artists will talk about their work, their inspiration and share tricks about their process while leading you in a project. Pizza, snacks, and beverages provided! It's all Free so bring a friend with you! Thanks to



SEPTEMBER 11

Abstraction Connection with Kaitlin Switzer

Switzer will introduce a few artist's secrets and tricks to show you how to create successful abstract paintings. Learn the rules, then break and bend them to create your own unique painting style. Kaitlin will bring out a variety of materials including watercolors, acrylic paint, and collage elements for you to experiment with.

OCTOBER 9

Lost and Found with James Louks

Louks will demonstrate found objects in art, specifically focusing on the practice of assemblage, sculptural collage and the combined works of Robert Rauschenberg. Participants will learn to decontextualize objects ultimately changing the meaning or significance of the symbol(s) they are working with.

NOVEMBER 13

"It just happened" Intuitive Painting with Cindy Laundrie

Ever feel stuck looking at a blank canvas? Laundrie will show you how to move past this by facing your fears and finding your hidden potential. Learn to inspire yourself!

DECEMBER 11

Free Flowing Cattle Markers with Jennifer Bardley

Enjoy the lush quality of painting with cattle marker and concentrated ink on a slick surface. Bardley will share what she has learned from her experience with this fun medium. Cattle marker yields great effects and surprises with its fluidity and textural qualities. You'll leave the art museum mooring over what a fun this is.

FOR FAMILIES

SATURDAY FAMILY ART WORKSHOPS

The whole family is invited to make art together. Older children can be left alone to create but parents are asked to stay with children under age 7. All classes are from 11 AM -12:30 PM. To be ensured a spot in these workshops please pre-register at least 2 days in advance. Thanks to our partnership with Community Medical Center our SFAW are FREE!

SEPT 14

Found Object Sculpture with Jolena Ryan

Create sculpture using books, paper maché and an assortment of found objects.

OCTOBER 12

Marvelous Marbling with Shelly Reisig-Lambros

In conjunction with the Festival of the Book participants will create beautiful marbled papers that can be used as book ends or to just make any paper a beautiful object in and of itself!

OCTOBER 26

Day of the Dead Sculptures

Celebrate this international holiday by creating whimsical and fun Day of Dead Skeleton Caricatures.

NOVEMBER 2

Willow Magic with exhibiting artist Christine Joy

Explore the nature of willow and various construction techniques with artist Christine Joy. Joy uses willow to create sculptural forms using her own construction techniques that she will demonstrate. This should be a fun, process-oriented time. Participants will leave with a greater knowledge of willow, a common roadside plant that thrives in Montana and their own unique construction. Cutting tools are sharp so adult assistance may be needed for very young children

DECEMBER 9-22

Drop In Holiday Art DIY Activities, Free

Celebrate the season with creativity! Come into the museum and create a holiday ornament or card at our Holiday Project Table in the Museum classroom. Bring a friend or family member and make a special gift Tuesday - Saturday 10 am - 5 PM or Sunday 12-5 PM.

NOVEMBER 9

Simple Symmetry with Cindy Laundrie

Families will learn why symmetry can be so pleasing to the eye. Each participant will create an eye catching, colorful and unique symmetrical painting.

DECEMBER 7

Holiday Drop-In Workshop, in conjunction with Missoula Parade of Lights, 12-2 PM.

DECEMBER 14

Printed Holiday Cards with Melissa Madsen

Explore different printmaking techniques as you create an edition of Holiday Cards to use this season.

FOR ADULTS

MONOTYPE MANIA

Bev Glueckert

September 21, 10 AM - 4 PM, \$40/36

Learn about the exciting world of monotype printmaking and create some unique images. Using MAM's printing press, you will have the chance to explore and experiment with various monotype techniques, both additive and reductive, including layering, stencils, and more. Bring some existing ideas/images, drawings or paintings you want to work from. Inks and papers provided.

THE PRACTICE OF DRAWING

Marilyn Bruya

Wednesdays, October 2 -30, 9 AM - 12 PM, \$100/90

Beginning and ongoing students are welcome. With the expert guidance of long time art teacher Marilyn Bruya, participants will learn to find their own way of seeing and making images. Exercises will include contour and gesture drawing, rendering volume and the study of positive/negative space. New drawing materials will be introduced throughout the weeks. As students become more confident in their drawing they will work on projects of their choice beyond the class sessions. A supply list will be provided upon registration.

BOOKMAKING WITH JAPANESE STAB BINDING

Audra Loyal

October 12, 1-4 PM, \$25/22.50

In conjunction with the Festival of the Book, Audra Loyal, owner of the Vespiary Book Binding and Restoration will present this class. Each participant will leave with a small book bound with traditional Japanese binding technique.

ABSTRACT WATERCOLOR: BOLD AND NON- REPRESENTATIONAL

Kaitlin Switzer

Saturdays, November 2-23, 1-3 PM, \$70/63

Participants will learn how to create successful abstract paintings through the use of value, patterns, the rule of threes,

and the refinement of color from ethereal transparencies to saturated, bold hues. Learning basic watercolor techniques, students will use the natural qualities of water color while simultaneously manipulating it to get extraordinary effects.

OPEN PRINTMAKING STUDIO

Facilitated by Diane Bodholt

**Saturdays, Sept 28, October 26,
November 30, 1-3 PM**

Take a one-time printing press orientation, on September 28, and then come and use MAM's printing press during any Open Printmaking Studio hours. Those who are already oriented with the press are also welcome to come on September 28. Fee is \$10 if you bring your own supplies, \$20 to use MAM supplies.

OPEN FIGURE DRAWING

**Beginning September 15,
Non-instructed, 3-5 PM, \$7/5**

Open Figure Drawing will resume on Sundays. This ongoing session provides artists an opportunity to draw from a live model in a relaxed and supportive atmosphere. Participants must be 18 years or older.

ART CRASH COURSE

Anna Buxton and Ted Hughes // 4:30-6 PM, Free

Always wanted to wow your friends with your art knowledge? Well dust off that beret and black turtle neck and join us for a series of four talks that will expand your understanding of art and the art world. You will finish the series not only enlightened and delighted, but as a bona fide art savant!

**SEPTEMBER 11
Visual Literacy with Anna Buxton.**

Anna will walk you through several important themes common in the art world, and share the basic approaches for analyzing artworks of any style, from realism to conceptualism.

**SEPTEMBER 25
The Roots of Modernism
with Anna Buxton**

Where in the heck did Cubism come from? In this talk Anna will lay out the progression of art movements, beginning in the mid-19th century that led to and cemented in place the modernist movement.

**OCTOBER 9
The Modernist Era with Ted Hughes**

Ted picks up the baton post WWI as modernist movements steamroll through the mid-20th century.

**OCTOBER 23
Post-Modernism and Contemporary
Art with Ted Hughes**

Hughes wraps up the series and brings us on home. Post-Modernism topples the Modernist giant. Pluralism is the word!

EDUCATION + OUTREACH

Indian Education For All: Teacher Training Opportunity

How to Look at Native Art with Artist and Educator Sara Siestroom at MAM

September 30, 12-3:30 PM, Fee: \$15 or \$20 with lunch, NOTE: PIR credit will be granted

12-1 PM: Informal luncheon // please register for this lunch by September 21

1-2:45 PM: Lecture

2:45-3:30 PM: Practice in Frost Contemporary American Indian Gallery and in classroom with work from MAM Contemporary American Indian Art Collection.

Guest lecturer, artist, and educator Sara Siestroom will discuss how to recognize Traditional, Customary, and Contemporary Native American Art. She will introduce terms and methods for analyzing materials, colors, symbols, narrative and historical context. In her talk, she will help us explore Native American Art from the perspective and canon of American Fine Art, and to recognize its sophistication, dynamism and ever evolving nature. Participants will also become familiar with MAM's Contemporary American Indian Art Collection and accompanying educational resources.

Sara Siestroom, a contemporary Native American artist, consultant, and educator, will provide this workshop. She is an enrolled member of the Confederated Tribes of Coos, Lower Umpqua, and Siuslaw tribes from the South Coast of Oregon. She earned a BS (Phi Kappa Phi) at Portland State University, 2005 and an MFA (with distinction) from Pratt Art Institute, Brooklyn, NY. This is her first solo museum exhibition.

For more information and reservations please contact Renee Taaffe, Education Curator, at renee@missoulaartmuseum.org or 406.728.0447, ext. 228.

Art Guide News!

This year MAM has decided to change its calendar to make the most of this year's Fifth Grade Art Experience (FGAE). The FGAE, which brings every fifth grade class in the county to MAM for a tour and hands-on art project, will start in February 2014, and continue through May. MAM has a stellar line-up of exhibitions, all of which are of value and insight for all ages, but this spring brings an exceptional opportunity for students and all visitors. MAM will be featuring *Under Pressure: Contemporary Prints From the Collection of Jordan Schnitzer* which showcases a premier selection of contemporary artists from the 1960's to the present. In addition, students will experience the work of Spokane native artist, Charlene Teeters. Teeters' work examines the use of Native American stereotypes in the sports arena and elsewhere. The FGAE creates an exceptionally high demand for volunteers as art guides (docents) and other helpers, but volunteers are always needed, as schools schedule tours throughout the year.

MAM is always seeking ways to better educate our volunteers and visitors interested in gaining a better understanding of contemporary art. MAM is offering a number of training opportunities. These include public lectures by noted scholars delving into the work of the late Ed Keinholtz and the magnificent collection of Willem Volkerz American Folk Art. In addition to these programs related to exhibitions, we are offering a series of lectures entitled: Art Crash.

This short series of lectures by staff members, Ted Hughes and Anna Buxton, will provide a formal and historical context for the existing and upcoming exhibits featured at MAM. Please take advantage of this free learning experience --- and please consider volunteering! We need your participation to keep MAM an exciting place for all to learn and experience the world of contemporary art.

Schedule For Art Guides:

September 6, 3 PM: Meet with exhibiting American Indian artist Sara Siestroom

September 11 & 25 and October 9 & 23, 4:30 PM: Art Crash Course

September 20, 3 PM: Orientation/Visual Thinking Strategies

September 27, 3 PM: Reviewing New Exhibitions: Keinholtz, Folk Art, & Christine Joy

September 30, 1 PM: Sara Siestroom Lecture: How to Look at Indian Art

November 1, 3 PM: Meet with exhibiting artist Christine Joy



MAM'S MISSION

MAM serves the public by engaging audiences and artists in the exploration of contemporary art relevant to the community, state and region.

HOURS:

Closed Mondays
Tuesday - Saturday 10 AM - 5 PM
Sunday 12 PM - 5 PM

MAM BOARD OF DIRECTORS:

Betsy Bach (President), John Paoli (Vice President), Leslie Ann Jensen (Treasurer), Brian Sippy (Secretary), Liz Dybdal (Past President), Dustin Hoon, Joe Nickell, Sharon Snavelly, Bobby Tilton, Janet Whaley.

MAM STAFF:

- LAURA MILLIN, EXECUTIVE DIRECTOR ext. 224, lauramillin@missoulaartmuseum.org
- ANNA BUXTON, MEMBERSHIP, VOLUNTEER & EVENT MANAGER ext. 230, anna@missoulaartmuseum.org
- JOHN CALSBEEK, ASSISTANT CURATOR & PREPARATOR ext. 229, johnc@missoulaartmuseum.org
- TRACY COSGROVE, INTERNAL OPERATIONS MANAGER ext. 225, tracy@missoulaartmuseum.org
- LILY FRANDBEN, VISITOR SERVICES ASSOCIATE ext. 221, lily@missoulaartmuseum.org
- STEPHEN GLUECKERT, EXHIBITIONS CURATOR ext. 226, stevegl@missoulaartmuseum.org
- CHARNEY GONNERMAN, VISITOR SERVICES ASSOCIATE ext. 221, info@missoulaartmuseum.org
- KAY GRISSOM-KIELY, DEVELOPMENT ext. 227, kay@missoulaartmuseum.org
- TED HUGHES, REGISTRAR ext. 222, ted@missoulaartmuseum.org
- KATIE STANTON, MARKETING & COMMUNICATIONS DIRECTOR ext. 231, katies@missoulaartmuseum.org
- RENEE TAAFFE, EDUCATION CURATOR ext. 228, reneet@missoulaartmuseum.org



ACCESSIBILITY CONTACT: Anna Buxton, ext. 230

MAM IS FUNDED IN PART by Missoula County and the City of Missoula. Additional support is generously provided by the Paul G. Allen Family Foundation, Montana Arts Council, Montana Cultural Trust, 21st Century Community Learning Center Grant, Art Associates of Missoula, Missoula Business Community, MAM Patrons and Members. MAM is accredited by the American Associations of Museums (AAM).

Free Expression. Free Admission.

335 N. Pattee//missoulaartmuseum.org //406.728.0447
GRAPHIC DESIGN: Yogesh Simpson | yogeshsimpson.com

Join/Give Today

I support

free expression/free admission

Join Renew Gift

MEMBER INFORMATION* (person joining or receiving gift)

Member Name _____
Second Card Holder (Dual level and higher) _____
Address _____
City _____ State _____ Zip _____
Phone (home) _____ (work) _____
E-mail _____

* MAM will not sell or distribute your information.

GIFT FROM (person purchasing gift membership)

Name _____
Address _____
City _____ State _____ Zip _____
Phone (home) _____ (work) _____
E-mail _____

MAM Circles of Support

Please visit missoulaartmuseum.org for Join/Give Circles of Support benefits.

+ Add Contemporary Collectors Circle to any of the circles below for an additional \$100.

- Community Circle: \$50 Individual, \$75 Dual or Family
- Friend Circle: \$125 - \$499
- Patron Circle: \$500 - \$999
- Leader Circle: \$1,000 - \$4,999
- Fellow Circle: \$5,000 - \$9,999
- Founders Circle \$10,000 - \$25,000

Educators, Seniors, & Students may select any Circle of Support level and take 20% off. Please show id with purchase.

PAYMENT

One Time Payment

Check payable to MAM Credit Card (Visa, MasterCard, or Discover)

MONTHLY AUTOPAY

Automatic withdrawal from your checking account or credit card monthly. An Individual MAMbership (\$40) is only \$3.33/month!

AutoPay Monthly Payment—Please charge \$ _____ to my credit card/ checking account monthly for one year. A blank, voided check is included.

Card Number _____

Expiration Date ____ / ____

Signature _____

OTHER GIVING OPTIONS

- My employer, _____, will match my gift.
- I am interested in learning more about Planned Giving/Bequests to MAM.

SEND TO:

MISSOULA ART MUSEUM
335 North Pattee St. Missoula, MT 59802



free admission. **free** expression. // missoulaartmuseum.org // 406.728.0447

New Members' Events

MAM is rolling out a new series of events exclusively for our members. These new events will bring members face-to-face with internationally recognized artists, scholars and performers, providing first access to the amazing, talented pool of creative thinkers that provide content at MAM. This fall members will be invited to meet painter Sara Siestroom, of the Confederated Tribes of Coos, Lower Umpqua and Siuslaw Tribes, writer/curator Tom Patterson, who recently published a book on the Reverend Howard Finster; and renown pianist Lydia Brown. Seasonal treats to eat and paired wines will be available.

SEPTEMBER 5 // Meet the Artist: Sara Siestroom

Join energetic and dynamic artist, curator, scholar, and educator Sara Siestroom in her exhibition *Ballast*.

OCTOBER 2 // Meet the Author: Tom Patterson

Internationally known writer, curator, and outsider art expert Tom Patterson will discuss folk artists and his new book "Strange and Wonderful."

OCTOBER 24 // CCC Members' Event, Meet the Artist: James Bailey

A Contemporary Collectors Circle Members' Event where Bailey will share his experiences working with world class artists such as Miriam Schapiro, Richard Mock, Bev Beck Glueckert, and others.

*Add CCC Membership to any of the above circles for an additional \$100 to attend all CCC events.

DECEMBER 13 // Meet the Pianist: Lydia Brown

MAM Chamber Music Series will showcase innovative musical works by living composers and leading American and international musicians, expanding the boundaries of the traditional concert-going experience featuring Lydia Brown as Artistic Director and Pianist.



MAM has many supportive Business Partners who offer valuable and tangible benefits to MAM Members. This Fall, MAM's partnership with Festival of the Book provides you with discounted tickets to the following events:

OCTOBER 11 // Raise a Glass with Your Favorite Author! Reader's and Writer's Reception - libations and hors d'oeuvres.

OCTOBER 12 // Share lunch with internationally acclaimed Author James Lee Burke.

Thank you for being a part of MAM's Circles of Support and contributing to new art and artists. We hope you enjoy these new benefits of MAM Membership!